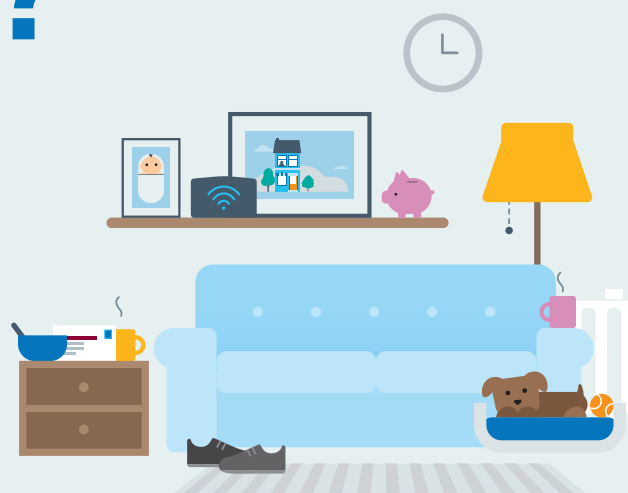


Test and Trace Support Payment

Is it for me?

You could get £500 to support you and your family if you can answer 'yes' to these questions:



Are you or your child self-isolating because of Covid-19?



If you or your child have been told to self-isolate after testing positive for Covid-19, or being in contact with someone else who has, your earnings could be affected.

Are you unable to work from home?



The nature of your job may mean you cannot work from home when you self-isolate. If you lose income, you may be eligible.

Are you receiving a benefit or on a low income?



You, or a partner who's living in the same household, must be receiving at least one means-tested benefit from the government or be on a low income. Your local authority will tell you what counts as low income.

Want to find out more?

**Go to www.gov.uk/test-and-trace-support-payment
Or to apply, contact your local authority.**